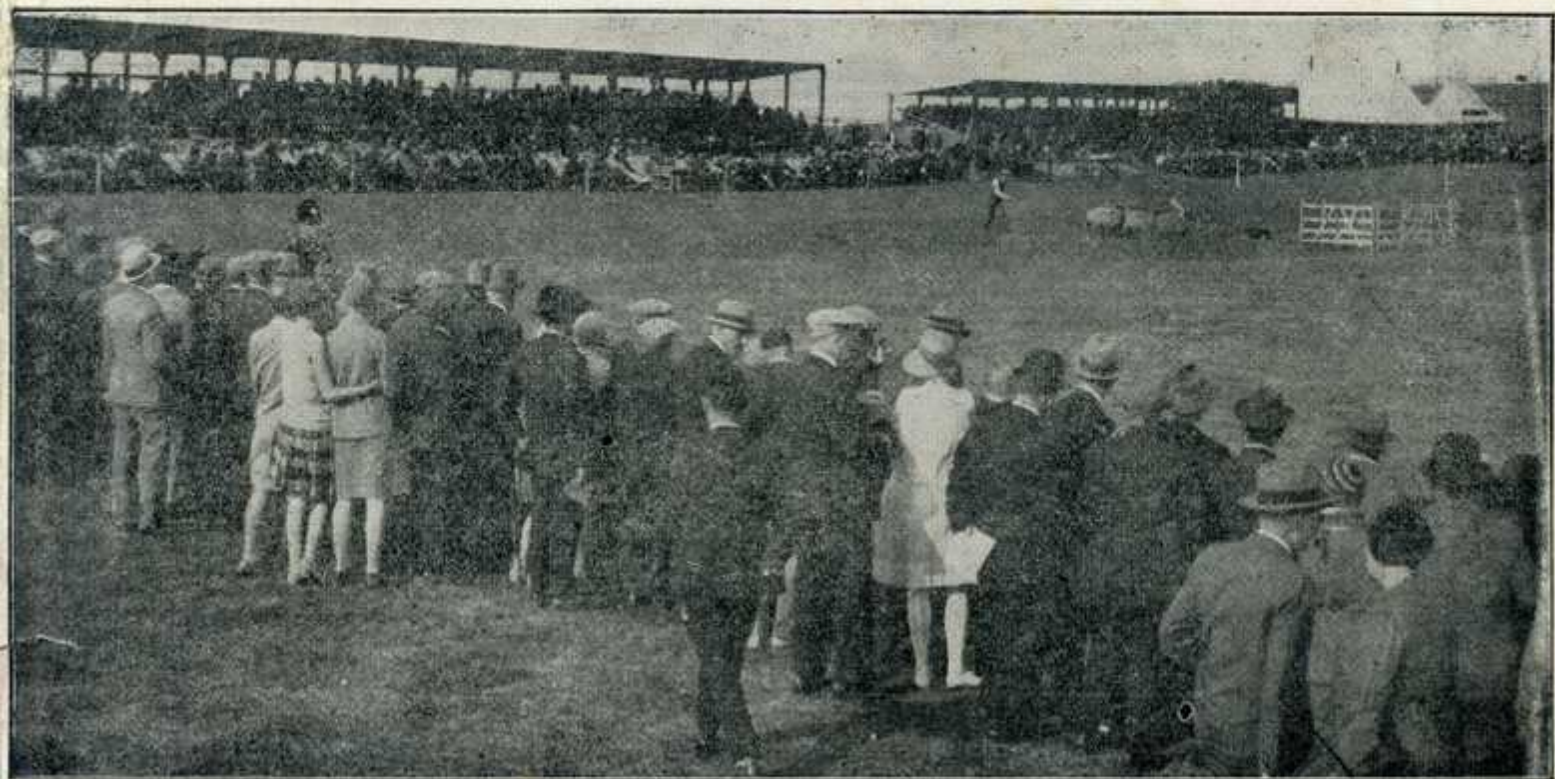


# INTERNATIONAL SHEEP DOG SOCIETY.

---

---



## PROGRAMME

OF THE FAMOUS

# International Sheep Dog Trials

At

Carrick Knowe Golf Links, Corstorphine, Edinburgh, (West)

(On main road from Glasgow to Edinburgh, directly opposite Edinburgh Zoo.)

On 19th, 20th and 21st SEPTEMBER, 1946

**DON'T MISS THIS GREAT PASTORAL EVENT!**

THE FINEST OF ITS KIND IN THE WORLD.

---

---

General Secretary—  
JAMES A. REID, Solicitor, Airdrie.  
(Tel. 2059)

Local Secretary—  
MUIR P. FINLAY, W.S. 55 Frederick Street, Edinburgh.  
(Tel. 22839)

©ISDS Sheepdog Archive, Maurice & Ros Collin

## **FIRST Day, Thursday, 19th September, 1946.**

Commencing at 9 a.m.

### **FORENOON.**

#### **Hired Shepherds' International Championship.**

Restricted to first three prize-winning dogs in Shepherds' Class at the Society's three National Trials this year (Scotland, England and Wales). Nine dogs in all. Course is the same as that for the Supreme Championship in "Singles" on the third day of the trials. 20 sheep for each dog. Time limit 30 minutes each dog, subject to extension.

### **AFTERNOON.**

#### **International "Brace" Championship.**

(2 Dogs Working simultaneously.)

Restricted to first three prize-winning pairs at Society's National Trials this year. Nine pairs in all. Course is the full Championship Course in "Doubles." 10 sheep for each pair. Time Limit 25 minutes. No extension.

## **SECOND Day, Friday, 20th September, 1946.**

Commencing at 9 a.m. (No Interval).

#### **Farmers' International Championship. International Team Championship. Qualifying Trials for Supreme Championship (Singles).**

Restricted to first 12 dogs (Farmers and Shepherds) in order of merit at each of the Society's three National Trials this year. 36 dogs in all. Course is the same as at each National. 5 sheep per dog. Time limit 15 minutes. No extension. In these trials two Championships are decided: (1) Farmers' International Championship and (2) International Team Championship. They also decide the 12 dogs qualifying for the Supreme Championship ("Singles") on the Saturday. These dogs are, in order of merit, the 12 highest pointed dogs of the 36 irrespective of Country or Class. Those selected will be announced at the close of the running on this day, (about 5.30).

## THIRD Day, Saturday, 21st September, 1946.

Commencing at 10 a.m. (Interval at one).

### Supreme Championship in "Singles".

Restricted to 12 highest pointed dogs in order of merit selected from Friday's trials irrespective of Country or Class. Course is the full Supreme Championship Course in "Singles." 20 sheep per dog. Time Limit 30 minutes, subject to extension.

#### NOTE.

While the three judges' placings in the above trials are being ascertained another Championship will be decided, viz:—

### The International "Driving" Championship.

————— :: —————

Restricted to first prize winner in **driving** at each National. 3 dogs in all. Distance 800 yards. 50 sheep per dog. Time limit 10 minutes. No extension

————— :: —————

### Presentation of Prizes

BY

### THE LADY PROVOST

(about 5 o'clock.)

INTERNATIONAL SHEEP DOG SOCIETY.

"International," Edinburgh, 19th, 20th & 21st Sept., 1946

ADMISSION CHARGES EACH DAY.

Ground Only.

**PUBLIC.** Adults 2/6. Children (under 14) 1/3d.

**MEMBERS.** (Life or Annual). Free.

(Members must produce their cards otherwise they will be charged, and no refunds can be given).

Car Park.

**PUBLIC.** Buses 5/-; Cars 2/6d.; Cycles 1/-.

**MEMBERS.** Cars 2/6; Cycles 1/-

Stand.

**RESERVED** by Special Ticket 5/- per day. Tickets obtainable from either Secretary.

**UNRESERVED.** 2/6 per person (Members and non-members).

Payable at Stand. No Tickets for Sale.

**NOTE.** Owing to the abnormal conditions now prevailing the stand accommodation at this International is not only less by one half of the accommodation usual at pre-war Internationals but is costing the Society proportionately almost four times more. In these very special circumstances accommodation (but **not** special seats), will be reserved for, and guaranteed to, those (members or non-members) who purchase stand tickets for either of the three days or all three days. If all available tickets are sold for any day the Stand will be closed that day (or days) against any further admission even although ticket holders may not attend. Only in so far as tickets are **not** sold for either day will the stand be open to persons not holding reserved stand tickets. Such persons vacating their seats during the trials cannot be guaranteed repossession of any seat, but **ticket holders** will get seats again though not, it may be, the seats previously occupied. Persons wishing to reserve seats in the Stand for either day or for the three days, should apply for tickets immediately to **either** Secretary (General or Local). In the sale of stand tickets no preference will be given to members as against the public or vice versa.

Chairs (1000-1500).

**RESERVED.** None.

**UNRESERVED.** PUBLIC 1/- per day.

**MEMBERS.** Free on production of Member's Card.

**NOTE.** Any chair-holder vacating his or her chair will be entitled to retake it or another chair **on the same day** on production of his or her chair ticket or member's card. A member's card applies only to the member personally and not to others accompanying him or her who do not hold cards.

---

JAMES A. REID, Solicitor, Airdrie, Hon. General Secretary. Telephone 2059.

MUIR P. FINLAY, W.S., 55 Frederick Street, Edinburgh, Local Secretary  
Telephone 33984.

AIRDRIE, 11th JULY, 1946.